



NetApp®

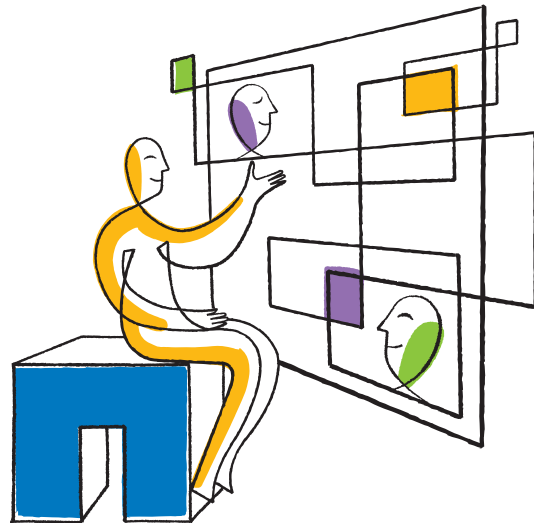
Encore Hollywood uses NetApp E5460 Storage Systems

Reprinted from Post Magazine, March 2013

With Encore Hollywood's already substantial list of television programming growing daily, the noted post house (www.encorehollywood.com) found itself needing more high bandwidth and another tier of redundancy for file storage, says VP of engineering Jay Bodnar. A fan of NetApp storage solutions, the facility went back for more, installing E5460 and E5424 SANs totaling 1.426 Petabytes (PB) of additional modular data storage, whose connectivity is shared with its Level 3 sibling in Burbank, Encore VFX in Toronto and Encore's TV presence in Vancouver, New York and London. "SANs are integral to our facility. We do a lot of finishing, color correction and conform— we're always touching files and need quick access; nearline or offline storage won't work for us," Bodnar says.

Encore Hollywood uses the larger E5460s to store lots of media for shows such as CSI, CSI: New York, Revenge, Hawaii Five-O, Castle, Body of Proof, Revolution and American Horror Story. The company works on a slate of 42 shows a year.

"The performance of the E5460 controllers allows us to access files quickly—there's 130TB behind them."



"The performance of the E5460 controllers allows us to access files quickly—there's 130TB behind them."

Jay Bodnar

VP of Engineering, Encore Hollywood

“We were at the limits of power we could get from the Department of Water and Power, but by investing in NetApp storage solutions we became more power efficient. That’s a big deal.”

Jay Bodnar

VP of Engineering, Encore Hollywood

Bodnar says. The smaller 5424s handle dailies processed at the facility and are a source for concurrent client deliverables.

“We looked at all the systems, and have a good relationship with Integrated Media Technologies, a NetApp vendor,” he explains. “We spent a lot of time talking to IMT and the NetApp folks about how we wanted to use storage, they understood the challenge at hand and the best tool-set for the job.”

Bodnar says Encore can justify its extensive storage capacity “because the bandwidth required to access files is still high. When things become cloud-based it will be different. But for now, using the right equipment makes the hassles of moving files around invisible to our clients.”

Bodnar cites the E-series’ performance, reliability, scalability, “great” price point and green efficiencies. “We’ve managed to replace 700TB of legacy storage with 1.426PB of NetApp storage while keeping the power load the same. That’s significant. We were at the limits of power we could get from the Department of Water & Power, but by investing in NetApp storage solutions we became more power efficient. That’s a big deal.”

HIGHLIGHTS

Applications Used on the Media Content Management Solution at Encore Hollywood

- Apple – Final Cut Pro, Compressor
- Autodesk – Inferno, Smoke, Lustre, Backdraft
- Atempo – Time Navigator, Digital Archive
- Blackmagic Design – DaVinci Resolve
- Digital Vision – Nucoda
- DVS – Clipster
- FilmLight – Baselight, Bones
- Red Digital Cinema– REDCINE-X PRO

Post

Used by Permission of Post Magazine
March 15, 2013 | By Christine Bunish